



地 址：北京市海淀区颐和园路5号100871
邮 箱：ghd@pku.edu.cn
电 话：+86 10 6275 7318
网 址：www.ghd.pku.edu.cn

5 Yiheyuan Road, Haidian District Beijing, China, 100871
E-Mail: ghd@pku.edu.cn
Office : +86 10 6275 7318
Website: www.ghd.pku.edu.cn



PKU INSTITUTE FOR
GLOBAL HEALTH
AND DEVELOPMENT
北京大学全球健康发展研究院



北京大学全球健康发展研究院
PKU Institute for Global Health and Development

北京论坛（2020）分论坛

新冠疫情下的全球健康与人类发展
暨北京大学全球健康发展研究院成立庆典

BEIJING FORUM 2020

COVID-19 Shock to Global Health and Development
PKU Institute for Global Health and Development
Launching Ceremony

2020.12.22 中国·北京

同一世界 同一健康
One World One Health



ESTABLISHMENT AND MISSION

成立与使命

新冠疫情在全球大流行，不仅严重威胁人类健康，同时引发各国经济增长、社会稳定以及全球治理的空前危机。为了更好应对人类健康与发展面临的世纪挑战，北京大学于2020年12月正式成立全球健康发展研究院。

北京大学全球健康发展研究院（简称“北大全健院”）旨在聚集经济与管理、公共卫生与医学、国际关系与外交、人口与环境、人文与社会等交叉学科的力量，以跨越国界的视角把全球健康置于人类发展框架，以“同一世界、同一健康”为核心理念，通过科学研究、智库服务、人才培养、产研融合，以及国际交流，探索人类健康重大议题的应对方案，促进创新科技成果的转化，推动中国积极参与全球卫生治理，助力构建人类健康发展共同体。



The COVID-19 pandemic has profoundly highlighted the importance and urgency of social stability and global health in human development. To better respond to enormous challenges facing human health and development ensuing the COVID-19, Peking University founded the Peking University Institute for Global Health and Development (PKU-iGHD) in December 2020.

PKU-iGHD is committed to integrating resources from multi-disciplines of economics and management, public health and medicine, international relations and diplomacy, population and environment, humanities and social sciences, setting global health in the framework of human development, and pursuing the core value of “One World, One Health”. Through scientific research, think tank services, talents training, industry-academia research cooperation, and international exchange and collaboration, the institute explores solutions to major health issues around the world, facilitates technology transfer, promotes China’s active participation in global health governance, and contributes global public goods for the health and wellbeing of mankind.



GLOBAL HEALTH

全球健康

全球健康是在全球化大背景下快速发展起来的新兴交叉学科，涵盖了医学、经济学、管理学、国际关系、社会学、伦理学等密切相关领域。全球健康学科超越部门、跨越国界、聚焦人类发展，致力于解决人类所面临的共同健康和卫生服务问题，同时关注人类-动物-环境生态和谐关系的一体健康（One-Health）。

全球健康治理基于尊重人权、保障社会公平，人人享有最高水准的健康和福祉的基本价值观，推动传统的和新型的、国家的和非国家的、卫生领域的和其它相关领域的众多行为体的共同参与，通过多元化外交谈判以制定全球行动的规则、标准和规范，并监测和评价全球健康行动的效果。

Global health is an emerging, cross-sector discipline against the backdrop of globalization, encompassing related fields include medicine, economics, management, international relations, sociology, ethics, and other related disciplines. Global health research, transcending departmental and national borders, is dedicated to providing solutions to global health and public services for mankind as a whole, at the same concerned with preserving the delicate balance of human-animal-environmental ecology, a concept referred to as "One Health".

Global health governance and policy-making is based on the fundamental values of respecting human rights and guaranteeing social justice, so that everyone around the world enjoys the highest level of health and wellbeing. Global health governance promotes the joint participation of many actors, including those in traditional and innovative, state and non-state, health and non-health sectors. Through diverse diplomatic negotiation, rules, standards and norms of global health are formulated, and the effect of global health policies are monitored and evaluated.

ACADEMIC DEVELOPMENT

学科建设

北京大学全球健康发展研究院采取全球招聘、双聘、兼职等多种创新方式，形成一个拥有多中心、多课题组，跨越多学科的国际一流科研、教学和智库服务团队。研究院优化集结北京大学现有全球健康相关学科的师资力量，目前包括公共卫生学院、基础医学院、药学院、护理学院、医学人文学院、国家发展研究院、南南合作与发展学院、经济学院、人口研究所、国际关系学院、光华管理学院、现代农学院、环境学院、工学院以及新闻传播学院等院系。与此同时，研究院建立覆盖发达国家与发展中国家的博士后流动站。

研究院建立国际领先的全球健康科学研究与交流平台，探索疾病预防与控制、卫生服务和健康管理新模式，应对疾病、气候、环境变化带来的挑战，提供卫生政策与服务的公共产品，促进全球健康治理体系改革与卫生外交。

研究院设立硕博研究生学位项目和高端培训项目，培养具有开阔的国际视野、深厚的人文底蕴，系统掌握全球健康所需的基本理论和知识技能，具有严谨的科学思维与实践创新能力的高端人才，使他们成为全球健康领域科学研究、政策评估与倡导，以及国际资源协调与行动的领军人物。

PKU-iGHD builds faculty capacity through global recruitment, dual- appointment, and collaboration with scholars beyond the university. In particular, the institute heavily draws rich faculty and research resources within Peking University, including from the School of Public Health, School of Basic Medical Sciences, School of Pharmaceutical Sciences, National School of Development, Institute of South-South Cooperation and Development, School of Economics, Institute of Population Research, School of International Studies, Guanghua School of Management, School of Advanced Agricultural Sciences, College of Environmental Sciences, College of Engineering, and School of Journalism and Communication. At the same time, PKU-iGHD builds a postdoctoral program for young research fellows from developed and developing countries.

The Institute is committed to excellence in global health research and dynamic international exchanges, and devoted to exploring new models of disease prevention and control, and health services and management, responding to the challenges posed by diseases, climate and environmental changes, and improving global health governance system with health diplomacy.

The institute offers both graduate degree programs and non-degree executive education programs, to train the next generation of global health leaders with global vision, profound knowledge, and innovative research capacity for the global health academia, public service, and business world.



GOVERNANCE

管理架构

研究院实行理事会领导下的院长负责制，下设理事会、国际顾问委员会、学术委员会，以及相关职能部门。理事会由北大分管校领导、研究院主要负责人、北大相关院系学科带头人、校外重大支持主体、核心合作方代表等构成。理事会负责审议和决定研究院的重大事务、制度规则以及主要负责人的任命。国际顾问委员会由国内外专家组成，负责指导研究院的发展方向，为研究院搭建与国际组织、各国政府及业界的沟通平台，并协助研究院的对外宣传和推介。学术委员会由研究院全职、双聘，以及个别兼职资深教授组成，负责审定研究院的学术标准、学术项目、教师引进与职称评审等相关工作，参与研究院的咨询与研究。

The PKU Institute for Global Health and Development led by a dean management team under the supervision of the Board of Directors, is composed of the Advisory Council, Academic Committee, and Administrative Office. The Board of Directors include representative leaders from the university, the institute and the institutions that play a vital role in PKU-iGHD's development. The Board of Directors is responsible for deliberating and deciding the institute's significant matters, system rules, and the superintendent appointment. The Advisory Council, composed of domestic and global distinguished experts, is to guide the direction of the institute's mission and development, and also be responsible for building a communication platform with international organizations, governments, and industries, assisting PKU-iGHD with external communication. The Academic Committee consists of senior faculty members with primary responsibility to set and approve academic standards for matters as faculty development, research code of conduct, and other major academic affairs.



Chairs of the Advisory Council

国际顾问委员会主席

韩启德

中方主席

HAN Qide

Co-Chair



韩启德，全球健康发展研究院顾问委员会联席主席，中国科学院院士，发展中国家科学院院士，美国医学科学院外籍院士。中国科学技术协会名誉主席，北京大学前沿交叉学科研究院院长、北京大学科学技术与医学史系主任。他曾任北京大学常务副校长兼研究生院院长、医学部主任，全国人大常委会副委员长，欧美同学会·中国留学人员联谊会会长，中国科学技术协会全国委员会主席，九三学社中央委员会主席，中国人民政治协商会议全国委员会副主席。长期从事分子药理学与心血管基础研究。在 $\alpha 1$ 肾上腺受体亚型研究领域获重要成果。关注学科交叉研究，研究受体等单分子在细胞中的转运及其生物学意义，用复杂系统手段研究肾上腺受体信号传导机制等。他毕业于上海第一医学院医学系，做过临床医师；获西安医学院（现西安交通大学医学部）病理生理学专业硕士学位，在美国埃默里大学药理系进修学习，后一直在北京医科大学（现北京大学医学部）从事教学科研工作。

HAN, Qide is Academician of the Chinese Academy of Sciences, Academician of World Academy of Sciences in developing countries, and a foreign fellow of National Academy of Medicine (United States). Currently serves as Honorary President of China Association for Science and Technology, Dean of Academy of Advanced Interdisciplinary Studies at Peking University, and Dean of Institute of History of Science Technology and Medicine. Successively served as Executive Vice President of Peking University, Vice Chairman of the National People's Congress Standing Committee, President of the Western Returned Scholars Association - Chinese Overseas-Educated Scholars Association, Chairman of Chinese Association for Science and Technology, Chairman of Central Committees of Jiusan Society, and Vice Chairman of National Committee of Chinese People's Political Consultative Conference. Graduated from Shanghai First Medical College and served as a medical doctor at rural clinics. After received Master's Degree in Pathophysiology at Xi'an Medical College, served as a faculty member at Beijing Medical College (Peking University Health Science Center). As a visiting scholar worked at Emory University Department of Pharmacology. His researches focus on molecular pharmacology and cardiovascular science, and lead to significant achievement in the field of $\alpha 1$ -adrenoreceptor subtypes. He has brought interdisciplinary approach into research, identified transportation of receptors and other single molecules in cells and its biological significance, and studied signaling mechanisms of adrenoceptors with systematic methodology.

萧庆伦，哈佛T.H. Chan公共卫生学院健康政策与管理系和全球健康与人口系K.T. Li经济学名誉教授，哈佛大学经济学博士，私人及社会保险领域拥有丰富经验的精算师，其健康经济和政策研究项目涵盖了发达国家和非发达国家。他是全球范围内全民健康保险领域的顶尖专家，并有40多年的研究经验。他一直积极地为许多国家和地区设计医疗系统改革和全民健康保险计划，包括美国、中国、哥伦比亚、波兰、越南、瑞典、塞浦路斯、乌干达、马来西亚、南非，以及台湾和香港地区。他先后当选为美国国家科学院院士，美国国家社会保险研究院和精算师协会的董事会成员。萧教授发表了180多篇论文和若干书籍，并在多个专业期刊的编辑委员会任职。他曾为三位美国总统、美国国会、世界银行、国际货币基金组织、世界卫生组织和国际劳工组织担任顾问。他同时担任几所中国一流大学的荣誉教授，并在其专业领域获得若干奖项。

William Hsiao is the K.T. Li Professor of Economics, Emeritus, in Department of Health Policy and Management and Department of Global Health and Population, at Harvard T.H. Chan School of Public Health. He received his Ph.D. in Economics from Harvard University. He is also a fully qualified actuary with extensive experience in private and social insurance. Dr. Hsiao's health economic and policy research program spans across developed and less developed nations. He is a leading global expert in universal health insurance, which he has studied for more than forty years. He has been actively engaged in designing health system reforms and universal health insurance programs for many countries and regions, including the USA, China, Colombia, Poland, Vietnam, Sweden, Cyprus, Uganda, Malaysia, South Africa, and Taiwan and Hong Kong. Hsiao was elected to be a member of the Institute of Medicine, US National Academy of Science, and also elected to be a Board member of the National Academy of Social Insurance and Society of Actuaries. He has published more than 180 papers and several books and served on several editorial boards of professional journals. He served as an advisor to three US presidents, the US Congress, the World Bank, the International Monetary Fund, World Health Organization, and International Labor Organization. He is a recipient of honorary professorships from several leading Chinese universities and several awards from his profession.

萧庆伦

外方主席

William Hsiao

Co-chair



Chair of the Board 理事会主席

詹启敏
理事会主席

ZHAN Qimin
Chair



詹启敏，北京大学博雅讲席教授，教育部长江学者特聘教授，中国工程院院士，北京大学全球健康发展研究院理事会主席，前任北京大学医学部主任。他是国家杰出青年基金获得者，国家自然科学基金委创新群体首席专家，国家973重大基础研究项目首席科学家。中国抗癌协会副理事长，中国医师协会副会长，欧美同学会海外医师协会会长，欧美同学会海外医师协会会长。长期致力于肿瘤分子生物学和肿瘤转化医学研究，在国际上率先发现和系统揭示了细胞周期监测点关键蛋白的作用和机制，阐明多个重要细胞周期调控蛋白在细胞癌变和肿瘤诊断与个体化治疗中的作用。在基因组水平全面系统地揭示了食管癌的遗传突变背景，为了解食管癌的发病机理、寻找食管鳞癌诊断的分子标志物、确定研发临床治疗的药物靶点提供了理论和实验基础。发表SCI学术论文270多篇，包括《Nature》、《Cell》、《Journal of Clinical Investigation》、《EMBO》、《Nat Communication》、《American J of Human Genetics》、《Cancer Research》，以及《Molecular Cancer and Oncogene》等，发表科技论文的SCI引用14,000多次，主编著作7部。

ZHAN Qimin, MD, is currently an Academician of the Chinese Academy of Engineering, PKU Boya Chair Professor, Chair of the Board Directors, Institute for Global Health and Development, Former President of Peking University Health Science Center. Dr. Zhan was the Chairman of the National Advisory Board for 863 High-Tech Plan in the field of biomedical sciences and is the Chief Scientist of the 973 National Fundamental Program. Dr. Zhan's research interest is focused on the molecular pathways involved in the control of cell cycle and the signaling pathways involved in regulation of the maintenance of genomic stability and tumor metastasis. In the recent years, Dr. Zhan has paid great attention to the cancer translational study, including molecular diagnosis and personalized therapy. His research has successfully attracted multiple grants from different funding agencies. Dr. Zhan's has published more than 270 peer-reviewed SCI papers. Many of his publications are in prestigious journals of the biomedical field, including Nature, Cell, Journal of Clinical Investigation, EMBO, Nat Communication, American J of Human Genetics, Cancer Research, Molecular Cancer and Oncogene. To date, these papers have been cited more than 14,000 times.

Dean Management Team 院长管理团队（按姓氏拼音排序）

刘国恩，经济学博士，北京大学全球健康发展研究院院长，国家发展研究院经济学教授、北大博雅特聘教授、教育部经济长江学者特聘教授，中国医学科学院学部委员。北京大学中国卫生经济研究中心主任。曾执教美国南加州大学，美国北卡大学，北京大学光华管理学院；曾当选中国留美经济学会主席，国际药物经济学会亚太联合会首任主席。目前担任《中美健康二轨对话》中方召集人，全国新冠肺炎专家组经济学家代表，国务院医改专家咨询委员会委员，中国药物经济学专业委员会主任委员，联合国秘书长特别顾问Jeffrey Sachs领导的《可持续发展行动网络》领导委员会“人类健康”组联席主席。曾先后担任国际英文学术期刊《Health Economics》(SCI)副主编，《Value in Health》(SCI)副主编，中文《经济学季刊》副主编，《中国药物经济学》期刊主编。获纽约城市大学研究院经济学博士学位，以及哈佛大学健康经济学博士后训练。其研究方向为健康与发展经济学，医疗体制改革，以及卫生技术评估。

刘国恩
院长

Gordon G. Liu
Dean

Gordon G. LIU, PhD., Dean of PKU Institute for Global Health and Development, PKU BOYA Distinguished Professor of Economics, MOE Yangtze River Scholar Professor of Economics at PKU National School of Development, an elected member of the Chinese Academy of Medicine, and Director of PKU China Center for Health Economic Research. Previously, he was on fulltime faculty at University of Southern California, UNC-Chapel Hill, PKU Guanghua School of Management. He served as the President of Chinese Economists Society, and founding chair of the ISPOR Asian Pacific Consortium. Currently, Prof. Liu is a co-organizer for the US-China Track II Dialogue on Health, and he is a member of China National Expert Panel on Covid-19, as well as on the State Council Health Reform Advisory Commission. He chairs the China Pharmacoeconomic Society, and co-chairs the Health Thematic Group of the UN Sustainable Development and Solution Network (SDSN) Leadership Council led by Jeffrey Sachs of Columbia University. Prof. Liu has served as Associate Editor for academic journals including Health Economics (HE), Value in Health (The ISPOR official journal), and China Economic Quarterly (CEQ). He received PhD in Economics from CUNY Graduate Center, and post-doctoral training in health economics from Harvard University, focusing on research areas in health and development economics, health policy reform, and health technology assessment.



秦雪征

副院长

QIN Xuezheng

Associate Dean



秦雪征，北京大学全球健康发展研究院副院长，经济学院教授、副院长，西方经济学专业主任，北京大学市场经济研究中心主任。他先后主持国家自然科学基金、教育部人文社会科学基金、加拿大国际发展研究中心等机构资助的多项课题，在《Journal of Comparative Economics》、《Health Economics》、《Health Policy and Planning》、《China Economic Review》、《经济学季刊》等中外著名学术期刊发表论文60余篇，出版《经济学原理》、《应用计量经济学：EViews与SAS实例》和《新型医疗保障体系中的农民工参保效果研究》等多部教材和著作。曾当选中国劳动经济学者论坛主席，担任国际学术期刊《China Economic Review》、《Emerging Markets Finance and Trade》、《Economic and Political Studies》等客座主编，并兼任国家自然科学基金和国家社会科学基金评审专家、北京党外高级知识分子联谊会理事等社会职务。他获得美国纽约州立大学经济学博士学位。其主要研究领域为卫生健康经济学、人力资本经济学、应用计量经济学。

QIN Xuezheng is Professor of Economics, Associate Dean of the School of Economics, and Director of Research Center for Market Economy, Associate Dean of the Institute for Global Health and Development, Peking University. He has successively presided over a number of research projects funded by the National Natural Science Foundation of China, Humanities and Social Sciences Foundation of the Chinese Ministry of Education, and Canadian International Development Research Centre. He has published over 60 academic papers in peer-reviewed journals, such as Journal of Comparative Economics, Health Economics, Health Policy and Planning, China Economic Review, China Economic Quarterly, Health Economics Policy and Law, and Geneva Papers on Risk and Insurance, and books like Applied Econometrics with EViews and SAS Examples, Migrant Workers in China's New Health Insurance System: A Study on the Effectiveness of Coverage, and Principles of Economics (co-author). He was elected as president for China Labor Economist Forum, and served as Guest Editor for China Economic Review, Economic and Political Studies, Emerging Markets Finance and Trade, and Inquiry. He is also an Editorial Board Member for China Health Review, an External Reviewer for National Natural Science Foundation of China & National Social Science Foundation of China, and an Executive Council Member for Beijing Association for Non-Party Senior Intellectuals. He received his Ph.D. in Economics from the State University of New York at Buffalo. His primary research interests include health economics, economics of human capital, and applied econometrics.

许铭，北京大学公共卫生学院全球卫生学系主任、研究员，北京大学全球健康发展研究院副院长、双聘研究员。复旦大学产业经济学博士，北京大学光华管理学院战略管理博士后，研究员。他曾任国际组织抗艾滋病、结核和疟疾全球基金新兴经济体司司长、对外关系高级政策顾问，商务部中国医药保健品进出口商会副会长，并在联合国伊拉克科威特观察团和中国驻韩国大使馆等机构任职。他在全球公共卫生、国际发展援助、医药产业竞争力与产业安全、国际药政管理和企业国际化等领域发表论文和文章百余篇，并有专著一部、合编多部；主持了多个重大国际合作和部级课题项目；曾长期担任国家医药重点项目和相关医药基地的评审组长和专家委员等。其研究领域涵盖：全球卫生治理、国际发展援助与公共产品、公共卫生金融。

许铭

副院长

XU Ming

Associate Dean



Dr Xu Ming is currently the Chair of the Department of Global Health, School of Public Health, and Associate Dean of the Institute for Global Health and Development, Peking University. Dr Xu has rich diplomatic and international working experience. He was the Head of the Department for Emerging Economics and previously the Senior Political Advisor for External Relations in the Global Fund to Fight AIDS, Tuberculosis and Malaria based in Geneva, Switzerland. Prior to that, he was the Vice President of China Chamber of Commerce for the Import and Export of Medicines and Health Products under the Ministry of Commerce of China. Earlier, he served in the United Nations Iraq-Kuwait Observation Mission and the Chinese Embassy in the Republic of Korea. When working with the Global Fund, his focus was mainly on the prevention and control of major infectious diseases and health system strengthening in the implementing countries, and building up collaborations with emerging economies in the health field. When working in China, he participated a lot in formulating the policies and regulations of China's healthcare industry, ranging from the promotion of trade and investment, regulation of medicinal products, to the enhancement of the international competitiveness of companies. He was the chair and PI of key health projects, and the head or member of evaluation groups to review major health projects at the national level. He got a Ph.D. in industrial economics from Fudan University and completed his post-doctoral fellowship at Guanghua School of Management of Peking University. He has written more than one hundred papers and articles in journals and specialized publications.

张海滨

副院长

ZHANG Haibin

Associate Dean



张海滨，北京大学全球健康发展研究院副院长，国际关系学院副院长、兼国际组织与国际公共政策系主任、教授、博士生导师，北京大学国际组织研究中心主任。主要研究领域：国际组织与全球治理、多边外交、全球环境与气候治理和中国环境外交研究。兼任第四届国家气候变化专家委员会委员、中国联合国协会常务理事、中华预防医学会全球卫生委员会委员、商务部贸易与环境专家组成员、文化与旅游部国家文化和旅游公共服务专家委员会委员、中国气象学会气候变化与低碳发展委员会委员、中国环境文化促进会理论界委员、“未来地球计划”中国国家委员会委员。作为中国政府代表团重要成员长期参加联合国环境谈判。他曾出版七部著作，在中外学术刊物上发表中英文论文近百篇。获北京市哲学社会科学优秀成果一等奖等省部级奖励4项。承担国家重点研发计划、国家科技支撑计划、国家自然科学基金、教育部人文社会科学基金等国家、部委和海外科研课题40多项。

ZHANG Haibin, Associate Dean, PKU Institute for Global Health and Development and Associate Dean and Professor at School of International Studies, Peking University. He is also Director of the Center for International Organization Studies at Peking University. His major research areas are international organizations and global governance, multilateral diplomacy, global environment and climate governance, and China's environmental diplomacy. He is a Member of the 4th National Climate Change Expert Committee, Member of the Standing Council of United Nations Association of China; the board member of Chinese Society of Global Health, Chinese Preventive Medicine Association; adviser to the Ministry of Commerce, China, on trade and environment issues; adviser to the Ministry of Culture and Tourism, China, on public service of culture and tourism; team member of the German foreign Office on climate and security; member of Governing Council of China Society for Environmental Resources Law; member of Governing Council of China Environment Culture Promotion Association; and member of Chinese National Committee for Future Earth. He has a long history of participation of international environmental negotiations as a member of Chinese delegation for United Nations Environmental Assembly. He published 7 books and nearly 100 articles in academic journals at home and abroad. He was awarded 4 provincial and ministerial-level academic prizes and chaired over 40 national, provincial and ministerial-level and overseas research projects.



GRADUATE EDUCATION

研究生学位教育

全球健康发展研究院将营造求真、创新，跨学科及多元文化的学习环境，综合运用课程讲授、专题讨论、学术论坛、课题研究，社会实践、国际交流，以及论文写作等多种教学方法，培养具有开放的科学思维、宽扩的国际视野，有效的沟通技能，能应对复杂多变世界的全球健康领域的领导者、政策制定者，高级研究人员，以及全球治理的外交人才。

其核心课程包括：应用经济学、公共卫生学、国际关系与外交学、人口学、环境科学、政治学，以及其它人文社科的理论专业课程。硕士或博士研究生须完成要求的学分，通过课程与资格考试、在导师的指导下开展科学研究、撰写论文，对全球健康与人类发展的重大问题，提出理论思想和解决方案，并成功通过论文答辩。

The Institute for Global Health and Development fosters an interdisciplinary and multicultural learning environment that encourages innovative ideas and intellectual truth-seeking, and cultivates the next generation of global health experts, policy makers, researchers, and health diplomats. PKU-iGHD provides students with semester-based courses, workshops and seminars, one-on-one academic research advisories, as well as opportunities to project researches, international exchanges, and on-the-job practices. Students are expected to develop a box of conceptual and professional tools, which helps build rigorous scientific thinking, broad international visions, effective communication skills, and abilities to solve complex and challenging real-world problems.

The Graduate Program in Global Health usually covers core curriculum including applied economics, public health science, international relations and diplomacy, population science, environmental science, political science, and other theoretical and professional courses in humanities and social sciences. A master or doctoral candidate must complete required graduate work, including required courses, comprehensive qualification and field specialization examinations (for PhD), academic research, dissertation with theoretical and/or practical contributions to major issues of global health and human development under the supervision of advisers, and pass the dissertation defense.

EXECUTIVE EDUCATION

高端管理培训

全球健康发展是一项关注人类共同命运的宏伟事业，需要不断培养能够洞察国情、放眼全球、科学理性、通晓全球健康规则的高端人才。全球健康发展研究院汇聚北大优秀师资团队，整合国际顶级专家资源，通过高端培训项目，面向卫生健康、医保、医药等行业部门、政府机构、学术团体等社会组织，培养具有健康经济学、公共卫生学、外交学、管理学等跨学科的复合型创新人才。

To improve human well-being, we need to cultivate a large number of high-calibre global health and development talents with global vision and local insights, rich multidisciplinary knowledge, and familiarity with international rules and standards. The Institute leverages excellent resources across the PKU campus and a pool of global leading experts focusing on economics and management, public health, diplomacy and global governance, to train talents from the healthcare industry, government, academia, and social organizations at home and abroad.



GLOBAL HEALTH BIG DATA PLATFORM

全球健康发展大数据平台

大数据技术在健康医疗领域的深度融合与应用，提升健康医疗服务的效率和质量，培育新的业态和新的经济增长点，为全球健康发展的科学研究、智库服务、科技转化提供重要的基础数据资源。

研究院将打造一个高效智能、互联互通、数据共享、安全保障的全球健康发展大数据平台，利用国际前沿的数据技术，整合多源全球健康医疗数据集，开展全人群健康大调查，对全球重大的健康问题及其应对策略提供严格计量分析与政策评价，并出台《北京大学全球健康发展指数》年度报告，为中国积极参与全球健康治理和促进全球健康发展提供智能工具与决策依据，贡献数字化的智慧与力量。

The deepening integration and application of big data technology in the field of health service could improve the efficiency and quality of the health and medical services, nurture emerging business models and new economic growth. The big data, as the fundamental data resource, will contribute significantly to the scientific research, think tank services, and transformation of scientific and technological achievements in the field of health service.

PKU-iGHD aims to build a Global Health Big Data Platform with features of high intelligence, connectivity, data-sharing, and info-security. Based on the cutting-edge international data technology and the platform, PKU-iGHD will integrate the multi-source global healthcare data sets, conduct the whole population health survey, and provide rigorous econometric analysis and policy evaluation of the major global health issues and the related response strategies. The Annual report of Peking University Global Health and Development Index will be released on the platform, which will contribute the wisdom and power of digitization in the way of offering intelligent tools and decision-making evidence to support China's engagement in global health governance and global health improvement.

RESEARCH TRANSFORMATION PLATFORM

研究成果转化平台

全健院依托北京大学医学、社会科学、经济与管理、信息与工程等多学科力量，汇聚社会优质创新生态资源，打造产研融合的创新平台，以专利为基础，推进健康医疗科技成果孵化、转化及产业化发展。

同时，在全球健康治理体系和治理能力的建设过程中，全健院以其国际性和前瞻性的研究为核心，积极开展国际交流与合作，持续挖掘各垂直领域顶级的创新项目，通过课题研究、案例开发、创业加速、高管培训、高端峰会等服务在科研成果转化、股权投资、人才培养、国际化等方面提供引领行业前沿的智力支持。

PKU-iGHD leverages advanced multidisciplinary resources in Health Science, Social Science, Economics and Management, Information Technology and Engineering of Peking University and beyond, strives to build an industry-education innovation platform based on patent project pipelines and translational funding to support scientific and technological advances in health and medical fields, thus facilitating the incubation and promotion of health and medical discoveries from practical medical application projects for commercialization.

Meanwhile, in nurturing its capabilities on global health governance, the institute will vigorously seek international exchange and collaboration centered on forward-looking and global perspectives and persistently pursue innovative high-impact projects in industry verticals. To provide business intelligence support for knowledge translation of research findings, equity investment, talent cultivation and internationalization, the Institute will perform academic research, case studies, start-up acceleration, executive education, high-level conferences and other services.

RESEARCH CENTERS

研究中心

全球健康与经济管理

人类健康与经济发展是人类演进的两大主线。健康本身是人类追求的根本目标；同时，健康又是人类创造经济财富必不可少的人力资本。因此，全球健康成为人类发展与跨国经济合作的基础条件。全球化助推的全球市场分工与协作，促进各国资源有效配置，大幅提高生产效率，从而为各国的健康促进、疾病防控提供了空前的经济保障。联合国2030可持续发展目标就是要解决社会、经济和环境的发展问题，其核心目标是要让落后国家脱离贫困桎梏和疾病伤害。而南北、南南之间通过国际贸易、跨国投资、技术分享及世界卫生管理等多项合作，是完成该目标的决定性条件。

Global Health and Economic Management

Health and economic development are two important strands of human progress. Good health is a fundamental pursuit for all humans; at the meantime, good health is the human capital necessary to create economic wealth. Thus, global health is a key condition for successful human development and transnational economic cooperation. Division of labor and international market collaboration facilitated by globalization have also greatly improved the space and efficiency of resource allocation in various countries, providing unprecedented economic development that supports health promotion and disease prevention activities. The key UN Sustainable Development Goals aim to help countries escape the dual shackles of poverty and disease. And North-South and South-South economic cooperation, as well as international trade, global investment, technology sharing, and world health management, are all decisive factors in accomplishing these goals.

2014 UN SDSN-Beijing Global Health Forum
联合国可持续发展行动网络-北京全球健康论坛

Peking University National School of Development
2014年5月13日下午，北京大学国家发展研究院



ISPOR Value Framework for HTA



全球健康与卫生技术评估

半个世纪以来，随着人类疾病谱的变化，即从传染性疾病为主逐步转向非传染性的慢病为主，现代医学技术对疾病的诊疗救治与人类健康水平的提高起到了不可估量的作用。同时，医疗服务市场的全球化进程得以空前快速发展，其中增长规模最大、增长速度最快的无疑是中国医药服务市场。在中国医疗卫生总费用中，医药技术相关的开支占据高达一半以上的份额，为全球之冠，这充分显示医药技术在中国医疗服务体系中举足轻重的作用。在全球化的大趋势下，医药卫生领域的国际贸易和跨国技术合作，必将长期影响中国医疗卫生体制的变迁，以及中国与世界各国之间的国际关系。因此，全球健康的一个重要研究领域就是对进出口的关键医药技术进行经济学成本效益评估，从而为国家制定相关政策和战略措施提供科学依据。

Global Health Technology Assessment

As the global burden of disease in the last century gradually shifted from infectious to noncommunicable disease, modern medical technology has continuously improved, increasing its role in the diagnosis and treatment of major diseases affecting human health. At the same time, the medical services market has globalized rapidly. Worldwide, China's medical services market is undoubtedly the fastest growing. Medical technology related expenditures account for more than half of China's total medical and health expenditure, the highest proportion in the world. This demonstrates the pivotal role of medical technology in China's advancing healthcare system. As long as globalization continues, the long-term impact of international trade on the pharmaceutical market and transnational technical cooperation on China's healthcare system reform will be further strengthened. Therefore, an important global health research area is the economic assessment of major medical technologies for import and export, providing a scientific basis for China to conduct efficient and sustainable policies in the global health and medical markets.

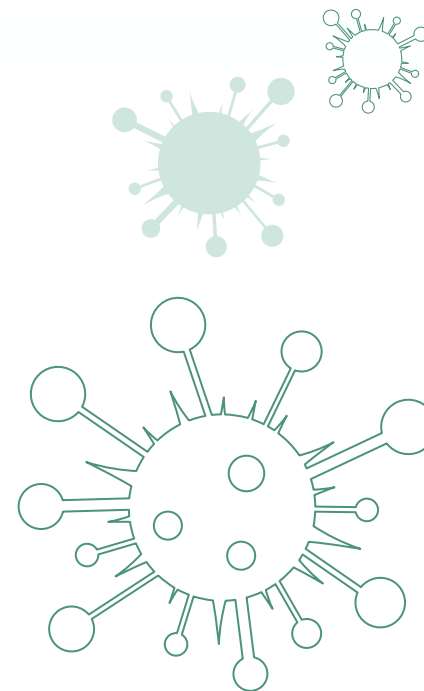
全球新发和突发传染病防控

在过去二十年，很多新兴传染病（例如新型冠状病毒、埃博拉、禽流感）的流行和一些传统的传染病的死灰复燃，及其对经济社会和人类发展产生了破坏性的影响，充分展示了提高公共卫生服务体系预防、检测和应对传染性大爆发能力的迫切性，以及开展跨地区、跨部门、跨领域合作的必要性。研究院充分利用现代信息技术和大数据，研究新发和再发传染病的传播路径、人群传播行为与作用机理，识别成本有效的防控策略和适宜技术，为全球健康的决策提供参考。



Global Prevention and Control of Emerging Infectious Diseases

Over the past two decades, emerging disease epidemics (such as the COVID-19, Ebola, Avian Flu) and the resurgence of traditional infectious diseases have had devastating economic, social, and human development impacts. This demonstrates the urgency of improving public health systems' capabilities to prevent, detect, and respond to large infectious disease outbreaks, especially through cross-regional, cross-departmental, and cross-disciplinary cooperation. The institute makes full use of modern information technology and big data to study the chain of transmission and population transmission dynamics of new and re-emerging infectious diseases, and identifies cost-effective disease prevention and control strategies, informing important global health decisions worldwide.



全球非传染性疾病预防防控

从全球来看，每年约50%的死亡原因是非传染性疾病。预计到2030年，全球每年因非传染性死亡的人数将达到5,200万，其中因心血管疾病、癌症、呼吸性疾病和糖尿病死亡的人数占到82%，而80%发生在中低收入国家。研究院围绕主要非传染性疾病，开展具有全球影响的区域、国别、人群、家庭的卫生问题，以及相关干预措施的研究。

Global Noncommunicable Disease Prevention and Control

Around 50% of global deaths each year are attributable to noncommunicable disease. It is estimated that by 2030, the number of annual deaths worldwide from noncommunicable disease will reach 52 million, 82% of which will be from cardiovascular disease, cancer, respiratory disease, and diabetes, and 80% of which will occur in low-and-middle-income countries. The institute focuses on major noncommunicable diseases and their related intervention measures, carrying out research on health issues from a regional, country-wide, population-based, and family-based perspective.



全球卫生治理与卫生外交

和平的国际环境和良好的外交条件对于世界各国的社会经济发展至关重要。全球健康涉及国家主权和全球行动之间的利益关系，需要通过共商、共建、共享的全球治理观念，构建人类命运共同体。研究院围绕国际贸易与健康、移民与健康、旅游与健康、知识产权与健康、国际援助与健康、全球卫生治理与健康公平和伦理、健康治理与“一带一路”发展战略等议题进行深入研究，开展政策对话，举行高峰论坛与国际会议，为中国参与全球治理体系改革和建设提供支持服务。

Global Health Governance and Diplomacy

A peaceful international community and good diplomatic relations are vital to the socioeconomic development of all countries around the world. Global health involves the relationship between national sovereignty and global action. Global health governance through joint consultation, policy-making, and ideas-sharing will help us build an international community dedicated to advancing the shared interests of mankind. The institute conducts in-depth study on topics such as international trade and health, migration and health, tourism and health, intellectual property and health, international aid, global health governance, health equity and ethics, and health governance as it relates to the “Belt and Road” development initiatives, carries out policy dialogues, holds summits and international conferences on global health, and provides support for China’s participation in the construction and reform of the global health governance system.

全球健康与环境治理

随着人口增长，有限的自然资源面临着越来越大的压力，气候变化、城市化快速发展等因素使得这一问题进一步恶化。研究院将围绕环境风险因素识别与干预、气候变化与食物供给及人类健康的作用机制，以及碳循环利用和碳减排创新科技等议题开展研究，打造创新生态加速平台，为各国更好合作实现碳中和目标与可持续绿色发展提供科学依据。

Global Health and Environmental Governance

As the global population grows, limited natural resources in China and internationally are under increasing pressure. Factors such as climate change and rapid urbanization have exacerbated this problem. The institute conducts research on topics such as the identification of and interventions for environmental risk factors, climate change, food insecurity, human health, and carbon emission reduction, builds the accelerator for innovation ecosystem, and provides a scientific basis for the international communities to work together to reach their goals on carbon neutrality.

北京大学全球健康发展论坛2022 | 全球健康：数字转型和发展鸿沟
PKU Global Health and Development Forum 2022 | Global Health: Digital Transformation and Development Divide



全球健康计量与智慧医疗

人类各地区的健康不平等，以及卫生资源地域分布的差异问题，一直是全球健康领域面临的重大挑战。健康计量、空间地理、机器学习，以及数字技术的快速发展，为应对这一挑战提供了更好的手段。研究院围绕各国人群的健康计量体系、健康行为、电子医疗、重大疾病预警等议题，开展基于数字技术和机器学习等方法的大数据网络集成与研究，定期对外发布中国版的全球健康计量指数报告，为各国更好合作解决全球健康问题提供科学依据和创新方案，促进人类健康公平和健康服务效率。

Global Health Measurement and Metrics

Health inequity and disparity in the geographic distribution of health resources have always been major global health challenges. The rapid development of health measurement technology, geographic information systems, machine learning, and digital technology provides us with better means to deal with this challenge. The institute carries out research on health outcomes measurement, health behaviors, telehealth, and early warning systems for major diseases using big data, digital technology, and machine learning methods, strives to develop and regularly publish a series of human health-based metrics, and contributes scientific evidence and innovative solutions to addressing global health problems, helping achieve improvement in global health equity and efficiency.



PKU-IGHD DEVELOPMENT FUND

全健院发展基金

为助力全健院履行历史使命、实现远大目标，北京大学教育基金会设立了“北京大学全球健康发展研究院发展基金”（“全健院发展基金”），冀希国内外机构、企业和个人，本着大爱情怀与高度的社会责任感，慷慨解囊捐助善款，用于北大全健院发展所需的楼宇建设、人才引进、人才培养、科学研究、智库服务与产教融合，以及行政管理费用。

“全健院发展基金”项下捐赠的款项，属于自愿无偿的公益性捐赠。捐赠款项汇入北京大学教育基金会（基金会）指定账户，并由基金会开具由国家财政部监制的公益性捐赠收据。基金会对其进行专项管理，独立核算，确保该捐赠资金按照捐赠协议专款专用。全健院按照“全健院发展基金”的捐赠用途，执行捐赠项目。捐赠项目将以捐赠方和受赠方共同认可的形式予以鸣谢和宣传。

“全健院发展基金”，分动本基金和不动本基金。动本基金：直接用于项目支出。不动本基金：本金保留，基金收益归入动本基金，以保证基金的稳定增长。每年的基金收益根据当年基金运作情况确定。

新增捐赠项目的资金根据其捐赠协议，确定资金的动本或不动本比例形式。

To help PKU-iGHD fulfill its mission and achieve the objectives, the Peking University Education Foundation (PKUEF) has set up a “PKU-iGHD Development Fund” for fundraising to support the institute long-term development. The Fund is used for the purpose of infrastructure, faculty development, talent cultivation, scientific research, think tank service and technology transfer, and related administration. We hope that prominent national and international organizations, businesses and individuals, in recognizing the common good of humanity and embracing the social responsibility, generously donate funds and play active roles to advance the cause of global health and development.

All the donation described in this proposal will be voluntary and free donations with no expectation of any kind of benefit in return. All research-related intellectual properties resulting from the project belong to Peking University. The donor will transfer the funds to an account designated by PKUEF, who will issue the receipt of donation as regulated by the Ministry of Civil Affairs. The Foundation will manage the account and ensure the funds are used in accordance with the donor's will as per the agreement. The PKU-iGHD is responsible for the execution of the donation project. PKUEF and PKU-iGHD will acknowledge and express their gratitude for the donor's benevolent deeds via channels agreed upon by all parties involved.

Donations to Peking University are classified as either endowed or expendable. An endowed fund is to be invested in perpetuity, with the distributions available to spend on activities consistent with the donation agreement or the use of “PKU-iGHD Development Fund”, ensuring a steady growth of funds. The investment returns each year may vary. An expendable fund is to be entirely spent on activities consistent with donation agreement or the use of “PKU-iGHD Development Fund”.

For any new contributions, the composition of endowed and expendable funds will be determined per the donation agreement executed.



DONATION AND ACKNOWLEDGEMENT

捐赠与鸣谢

捐赠管理

本项目书所筹集的捐赠为自愿无偿的公益性捐赠，不涉及任何利益回报条件。项目涉及的科研成果和知识产权归属北京大学。捐赠方将赠款汇入北京大学教育基金会下设的北京大学全球健康发展研究院发展基金账户，并由北京大学教育基金会开具由国家财政部监制的公益性捐赠收据。

基金会对捐赠款项进行专项管理，独立核算，确保该捐赠资金按照捐赠协议中所陈述的用途专款专用。研究院负责项目的具体执行。捐赠方有权查询捐赠款的使用、管理情况，对于捐赠方的查询，基金会和研究院将及时如实答复。基金会和研究院将以捐赠方和受赠方都认可的形式对捐赠善举予以鸣谢和宣传。

捐赠免税

北京大学教育基金会具有公益性捐赠税前扣除资格。个人的公益捐赠额未超过纳税义务人申报的应纳税所得额 30% 的部分，企业公益性捐赠支出在年度利润总额 12% 以内的部分，准予在计算应纳税所得额时扣除。企业慈善捐赠支出超过法律规定的准予在计算企业所得税应纳税所得额时当年扣除的部分，允许结转以后三年内在计算应纳税所得额时扣除。

捐赠鸣谢

受捐方将以适合的方式感激捐赠方对全球健康发展和教育科学文化事业的鼎力支持。捐赠达到一定金额，可以根据捐赠标的和捐赠方的意愿冠名。

Donation Management

All donation described in this proposal go to the will be voluntary and free donations and will not be used to fund collaborative research, with no expectation of any kind of benefit in return. All research-related intellectual properties resulting from the project belong to Peking University. The donor will transfer the funds to an account specified by the Peking University Education Foundation, who will issue the receipt of donation as regulated by the Ministry of Civil Affairs.

The Foundation will separately manage the account and conduct independent auditing to ensure the funds are used according to the donor's wishes. The PKU-iGHD is responsible for the execution of the project. The use and management of the proceeds will be carried out in strict accordance with the donation agreement and the Foundation's financial policies and procedures. The donor is entitled to make inquiries concerning the use and management of the funds and the Foundation and PKU-iGHD are obliged to provide truthful responses. In addition, the Foundation and PKU-iGHD will acknowledge and express their gratitude for the donor's benevolent deeds via channels agreed upon by all parties involved.

Tax Deductible

The contribution to the Peking University Education Foundation is qualified for pre-tax deduction. For an individual's contribution, the highest amount for pre-tax deduction is 30% of the income tax he or she should pay. As for an enterprise's contribution, the amount of pre-tax deduction shall not exceed 12% of its annual profits. If an enterprise's contribution in one year exceeds the maximum amount allowed for pre-tax deduction for the year, the balance could be accrued and deducted within the next three years.

Acknowledgement

The beneficiary will acknowledge and express their gratitude for the contributor's benevolent deeds as agreed upon by all parties involved. If the funds contributed reach or exceed a pre-defined level, PKUEF could arrange title sponsorship for the contributor if this is his or her wish.



FACULTY

师资队伍

Full/Jointly Appointed 全职|双聘



■ 崔富强 | CUI Fuqiang

北京大学公共卫生学院全球卫生学系副主任、研究员
北京大学全球健康发展研究院双聘研究员
Deputy Chair and Research Professor
Department of Global Health, School of Public Health
Joint Research Professor, Institute for Global Health and Development
Peking University



■ 戴瀚程 | DAI Hancheng

北京大学国家发展研究院博雅青年学者、长聘副教授
北京大学全球健康发展研究院双聘副教授
PKU BOYA Youth Scholar, Tenured Associate Professor
National School of Development
Joint Associate Professor, Institute for Global Health and Development
Peking University



■ 傅军 | FU Jun

北京大学国家发展研究院教授、南南学院学术院长
北京大学全球健康发展研究院双聘教授
Professor, National School of Development
Academic Dean, Institute of South-South Cooperation and Development
Joint Professor, Institute for Global Health and Development
Peking University



■ 郭岩 | GUO Yan

北京大学公共卫生学院全球卫生学系教授
北京大学全球健康发展研究院双聘教授
Professor, Department of Global Health, School of Public Health Joint
Professor, Institute for Global Health and Development
Peking University



■ 胡玉坤 | HU Yukun

北京大学全球健康发展研究院研究员
Research Professor, Institute for Global Health and Development
Peking University



■ 黄成 | HUANG Cheng

北京大学全球健康发展研究院教授
Professor, Institute for Global Health and Development Peking University



■ 黄季焜 | HUANG Jikun

北京大学现代农学院博雅特聘教授、新农村发展研究院院长
北京大学全球健康发展研究院双聘教授
PKU BOYA Distinguished Professor, School of Advanced Agricultural
Sciences Director, New Rural Development Institute
Joint Professor, Institute for Global Health and Development
Peking University



■ 黄婧 | HUANG Jing

北京大学公共卫生学院副研究员
全球健康发展研究院双聘副研究员
Associate professor in Department of Occupational and Environmental
Health Science in School of Public Health
Joint associate professor of PKU Institute for Global Health and
Development and School of Public Health


黄薇 | HUANG Wei

北京大学环境医学研究所副所长、公共卫生学院教授
北京大学全球健康发展研究院双聘教授
Deputy Director and Professor, Institute of Environ Medicine
School of Public Health
Joint Professor, Institute for Global Health and Development
Peking University


黄炜 | HUANG Wei

北京大学国家发展研究院长聘副教授
北京大学全球健康发展研究院双聘副教授
Tenured Associate Professor, National School of Development
Joint Associate Professor, Institute for Global Health and Development
Peking University


黄旻木 | HUANG Yangmu

北京大学公共卫生学院全球卫生学系副主任、研究员
北京大学全球健康发展研究院双聘研究员
Deputy Chair and Research Professor
Department of Global Health, School of Public Health
Joint Research Professor, Institute for Global Health and Development
Peking University


金音子 | JIN Yinzi

北京大学公共卫生学院全球卫生学系助理教授、副研究员
北京大学全球健康发展研究院双聘助理教授
Associate Research Professor
Department of Global Health, School of Public Health
Joint Assistant Professor, Institute for Global Health and Development
Peking University


贾忠伟 | JIA Zhongwei

北京大学公共卫生学院全球卫生学系教授
北京大学全球健康发展研究院双聘教授
Professor, Department of Global Health, School of Public Health
Joint Professor, Institute for Global Health and Development
Peking University


焦秉立 | JIAO Bingli

北京大学电子学院教授
移动数字医院系统教育部工程研究中心主任
北京大学全球健康发展研究院双聘教授
Professor of School of Electronics, Peking University
Director of Ministry of Education Engineering Research Center for Mobile
Digital Hospital System
Joint Professor, Institute for Global Health and Development Peking University


蒋少翔 | JIANG Shaoxiang

北京大学全球健康发展研究院助理研究员
Research Assistant Professor
Institute for Global Health and Development
Peking University


雷晓燕 | LEI Xiaoyan

北京大学国家发展研究院博雅特聘教授、学术委员会主席
北京大学全球健康发展研究院双聘教授
PKU BOYA Distinguished Professor
Academic Chair, National School of Development
Joint Professor, Institute for Global Health and Development
Peking University


刘国恩 | Gordon G. Liu

北京大学国家发展研究院博雅特聘教授
北京大学全球健康发展研究院院长
中国医学科学院学部委员
PKU BOYA Distinguished Professor, National School of Development
Dean, Institute for Global Health and Development Peking University
Elected member of the Chinese Academy of Medicine


刘珏 | LIU Jue

北京大学公共卫生学院流行病学与卫生统计学系研究员
北京大学医学部潍坊市妇幼健康联合研究中心副主任
北京大学全球健康发展研究院双聘研究员
Research Professor, Department of Epidemiology and Biostatistics
School of Public Health
Deputy Director of the Peking University Health Science Center-Weifang
Joint Research Center for Maternal and Child Health
Joint Research Professor, Institute for Global Health and Development
Peking University



吕蓓妮 | LYU Beini

北京大学全球健康发展研究院助理教授
Assistant Professor
Institute for Global Health and Development
Peking University



林昊翔 | LIN Haoxiang

北京大学全球健康发展研究院助理研究员
Research Assistant Professor
Institute for Global Health and Development
Peking University



林淑君 | LIN Shujun

北京大学全球健康发展研究院助理研究员
Research Assistant Professor
Institute for Global Health and Development
Peking University



潘聿航 | PAN Yuhang

北京大学全球健康发展研究院助理教授
Assistant Professor
Institute for Global Health and Development
Peking University



秦雪征 | QIN Xuezheng

北京大学经济学院副院长、西方经济学专业主任、教授
北京大全球健康发展研究院副院长
Associate Dean, School of Economics
Director, PKU Research Center for Market Economy
Associate Dean, Institute for Global Health and Development
Peking University



石菊 | SHI Ju

北京大学经济学院院长特聘副教授
北京大学全球健康发展研究院双聘副教授
Tenured Associate Professor, School of Economics
Joint Associate Professor, Institute for Global Health and Development
Peking University



孙宇 | SUN Yu

全球健康发展研究院科研项目部主任、副研究员
中国卫生经济研究中心副主任
Director of Department of Research Projects and Research Associate
Professor, PKU Institute for Global Health and Development
Deputy Director, China Center for Health Economic Research
Peking University



田佑中 | TIAN Youzhong

北京大学全球健康发展研究院战略发展部主任
北京大学全球健康发展研究院研究员
Director, Department of Strategic Development
Institute for Global Health and Development Peking University
Research Professor of PKU Institute for Global Health and Development



王昱 | WANG Yu

北京大学公共卫生学院全球卫生学系讲师
北京大学全球健康发展研究院双聘讲师
Lecturer, Department of Global Health, School of Public Health
Joint Lecturer, Institute for Global Health and Development
Peking University



汪涛 | WANG Tao

北京大学第三医院肾内科教授
北大全球健康发展研究院双聘教授
Professor, Department of Nephrology, Peking University Third Hospital
Joint Professor, Institute for Global Health and Development
Peking University



徐建华 | XU Jianhua

北京大学环境科学与工程学院环境管理系长聘副教授
北京大学全球健康发展研究院双聘副教授

Associate Professor
Department of Environmental Management, College of Environmental
Sciences and Engineering
Joint Associate Professor, Institute for Global Health and Development
Peking University



徐晋涛 | XU Jintao

北京大学国家发展研究院博雅特聘教授、环境与能源经济研究中心主任
北京大学全球健康发展研究院双聘教授

PKU BOYA Distinguished Professor, National School of Development
Director, China Center for Energy and Development
Joint Professor, Institute for Global Health and Development
Peking University



许静 | XU Jing

北京大学新闻与传播学院教授、健康传播专业主任
北京大学全球健康发展研究院双聘教授

Professor, School of Journalism and Communication
Joint Professor, Institute for Global Health and Development
Peking University



许铭 | XU Ming

北京大学公共卫生学院全球卫生系主任、研究员
北京大学全球健康发展研究院副院长

Chair and Research Professor
Global Health Department, School of Public Health
Associate Dean, Institute for Global Health and Development
Peking University



姚奕 | YAO Yi

北京大学经济学院特聘副教授
北京大学全球健康发展研究院双聘副教授

Tenured Associate Professor, School of Economics
Joint Associate Professor, Institute for Global Health and Development
Peking University



易红梅 | YI Hongmei

北京大学现代农学院副教授
北京大学全球健康发展研究院双聘副教授

Associate Professor, School of Advanced Agricultural Sciences
Joint Associate Professor, Institute for Global Health and Development
Peking University



尹慧 | YIN Hui

北京大学公共卫生学院全球卫生学系讲师
北京大学全球健康发展研究院双聘讲师

Lecturer, Department of Global Health, School of Public Health
Joint Lecturer, Institute for Global Health and Development
Peking University



袁野 | YUAN Ye

北京大学经济学院助理教授
北京大学全球健康发展研究院双聘助理教授

Assistant Professor, School of Economics
Joint Assistant Professor, Institute for Global Health and Development
Peking University



曾毅 | ZENG Yi

北京大学国家发展研究院返聘教授
北京大学全球健康发展研究院双聘教授

Emeritus Profess, National School of Development, Peking University
Joint Professor, PKU Institute for Global Health and Development



张丹丹 | ZHANG Dandan

北京大学国家发展研究院博雅青年学者、长聘副教授
北京大学全球健康发展研究院双聘副教授

PKU BOYA Youth Scholar, Tenured Associate Professor
National School of Development
Joint Associate Professor, Institute for Global Health and Development
Peking University

**张海滨 | ZHANG Haibin**

北京大学国际关系学院副院长、国际组织与国际公共政策系主任、教授
北京大学全球健康发展研究院副院长

Associate Dean, School of International Studies
Director and Professor, Center for International Organization Studies
Associate Dean, Institute for Global Health and Development
Peking University

**张路霞 | ZHANG Luxia**

北京大学健康医疗大数据国家研究院副院长、北大医院肾内科主任医师
北京大学全球健康发展研究院双聘教授

Professor of Nephrology, Peking University First Hospital Associate Dean,
National Institute of Health Data Science
Joint Professor, Institute for Global Health and Development
Peking University

**张清敏 | ZHANG Qingmin**

北京大学国际关系学院外交学系主任、教授
北京大学全球健康发展研究院双聘教授

Chair and Professor, Department of Diplomacy, School of International Studies
Joint Professor, Institute for Global Health and Development
Peking University

**赵耀辉 | ZHAO Yaohui**

中国健康与养老追踪调查 (CHARLS) 项目负责人
北京大学国家发展研究院博雅特聘教授
北京大学全球健康发展研究院双聘教授

Head of China Health and Retirement Longitudinal Study
PKU BOYA Distinguished Professor, National School of Development
Joint Professor, Institute for Global Health and Development Peking University

**郑强 | ZHENG Qiang**

北京大学工学院药物信息与工程研究中心主任
北京大学全球健康发展研究院双聘教授

Director and Professor, Center for Pharmaceutical Information and
Engineering Research, School of Engineering
Joint Professor, Institute for Global Health and Development
Peking University

**郑晓瑛 | ZHENG Xiaoying**

北京大学人口所博雅特聘教授，北京大学亚太经合组织健康科学研究
院院长

北京大学全球健康发展研究院双聘教授
PKU BOYA Distinguished Professor, Institute of Population Research
Dean, PKU-APEC Health Science Academy
Joint Professor, Institute for Global Health and Development Peking University

**张振宇 | ZHANG Zhenyu**

北京大学公共卫生学院全球卫生学系助理教授、副研究员
北京大学全球健康发展研究院双聘助理教授

Associate Research Professor
Department of Global Health, School of Public Health
Joint Assistant Professor, Institute for Global Health and Development
Peking University

Affiliated Faculty**兼职教授****陈希 | CHEN Xi**

耶鲁大学全球健康政策与经济学副教授
北京大学全球健康发展研究院兼职副教授

Associate professor of Global Health and Economics, Yale University
Affiliated Associate Professor, PKU Institute for Global Health and
Development

**董继萃 | DONG Jicui**

世界卫生组织总部药品和健康产品可及性署监管及预认证司本地化
生产和技术支持处处长
全球健康发展研究院兼职教授

Unit Head of the Local Production and Assistance Unit in the Department
of Regulation and Prequalification and Division of Access to Medicines
and Health Products in WHO-HQ
Adjunct Professor of PKU Institute for Global Health and Development



冯思慎 | FENG Si-shen

新加坡国立大学教授
全球健康发展研究院兼职教授和高级顾问
Adjunct Professor of National University of Singapore
Adjunct Professor & Senior Advisor of PKU Institute for Global Health and Development



吴琼 | Eric Q. Wu

安诺析思国际咨询执行董事
北京大学全球健康发展研究院兼职教授
Executive Director, Analysis Group
Affiliated Professor, PKU Institute for Global Health and Development



黄捷 | HUANG Jie

南方科技大学公共卫生学院应急管理研究中心执行主任、研究员
北京大学全球健康发展研究院兼职研究员
Associate Professor, School of Public Health and Emergency Management
Southern University of Science and Technology
Affiliated Research Professor, PKU Institute for Global Health and Development



谢锋 | XIE Feng

加拿大麦克马斯特大学教授
北京大学全球健康发展研究院兼职教授
Professor, Health Economics, McMaster University
Affiliated Professor, PKU Institute for Global Health and Development



金霞 | JIN Xia

火石创造董事长
全球健康发展研究院兼职研究员
Founder of Huoshi Chuangzao
Affiliate Research Professor of PKU Institute for Global Health and Development



易榕 | YI Rong

明德咨询大中华区医疗管理咨询负责人
北京大学全球健康发展研究院兼职研究员
Principal, Greater China Health Analytic Practice, Milliman, Inc
Affiliated Research Professor, PKU Institute for Global Health and Development



侯晓辉 | HOU Xiaohui

世界银行高级经济学家
北京大学全球健康发展研究院兼职教授
Senior Economist in the World Bank
Affiliated Faculty Member, PKU Institute for Global Health and Development



阎丽静 | YAN Lijing

昆山杜克大学全球健康研究中心慢性病科室主任、教授
北京大学全球健康发展研究院兼职教授
Head and Professor, NCDs Research of Global Health Research Center
Duke Kunshan University
Affiliated Professor, PKU Institute for Global Health and Development



肖恩 西尔维亚 | Sean Sylvia

美国北卡大学助理教授
北京大学全球健康发展研究院兼职助理教授
Associate professor of Global Health and Economics, Yale University
Affiliated Associate Professor, PKU Institute for Global Health and Development



姚璐 | YAO Lu

北京大学全球健康发展研究院兼职助理研究员
中国政法大学商学院讲师
Affiliated Assistant Research Fellow, Institute for Global Health and Development, Peking University Assistant Professor, Business School, China University of Political Science and Law



■ 郑志杰 | ZHENG Zhijie

比尔及梅琳达·盖茨基金会北京代表处首席代表
北京大学医学部、北京大学全球健康发展研究院兼职教授
Chief Representative in China, Bill & Melinda Gates Foundation
Affiliated Professor, PKU Health Science Center
Affiliated Professor, PKU Institute for Global Health and Development



■ 周脉耕 | ZHOU Maigeng

中国疾病预防控制中心慢病中心副主任，研究员
北京大学全球健康发展研究院兼职教授
Deputy Director and Research Professor, National Center for Chronic and
Noncommunicable Disease Control and Prevention, China CDC
Affiliate Professor, PKU Institute for Global Health and Development

Strategic Development 战略发展



■ 田佑中 | TIAN Youzhong

北京大学全球健康发展研究院战略发展部主任
北京大学全球健康发展研究院研究员
Director, Department of Strategic Development
Institute for Global Health and Development Peking University
Research Professor of PKU Institute for Global Health and Development



■ 谢琛 | Jane Xie

北京大学全球健康发展研究院战略发展部副主任
Associate Director, Department of Strategic Development
Institute for Global Health and Development
Peking University



■ 尹凯 | YIN Kai

北京大学全球健康发展研究院战略发展部项目主管
Project Manager, Department of Strategic Development
Institute for Global Health and Development
Peking University

YOUNG SCHOLARS SCHOLARSHIP

青年学者研究项目

为推动全球健康学科建设与人才培养，北京大学全球健康发展研究院于2022年夏启动“北京大学全球健康发展青年学者奖学金”项目，旨在促进全球健康发展学科的中青年人才培养。该项目广纳英才，诚邀国内外相关学科背景的优秀学者申请，领域覆盖：健康经济学、药物经济学、疫苗经济学、全球健康治理、医疗保险政策、健康与生态、医学数字治理等。根据项目设计，成功入选者将获得奖学金资助，用于开展个人申请提交的研究项目，并根据其时间安排和研究兴趣，确定以北京大学教授为主的“一对一”学术导师，全程指导为期一年的研究课题，包括安排到北京大学开展为期5个月的访学研究。

本项目收到来自国内外60多位优秀学者的申报。通过16位资深学者评审小组的书面初筛和线上会评，根据候选人提交的研究项目、学科多元性、高校代表性等综合因素，最终评选出5位杰出中青年学者，学术背景包括公共卫生、药事管理、应用经济，研究领域涵盖药物政策、环境健康、健康经济、医保制度等。

In order to promote the construction of the global health discipline and the cultivation of talents, the Peking University Institute for Global Health and Development launched the "PKU Global Health and Development Young Scholars Scholarship" in the summer of 2022, aiming to promote the cultivation of young and middle-aged talents in the discipline of global health and development. The program recruit talents and invites exceptional scholars with relevant academic background at home and abroad to apply. The fields cover: Health Economics, Pharmacoeconomics, Vaccine Economics, Global Health Governance, Health Insurance Policy, Health and Ecology, Health Digital Governance, etc. According to the project design, the successful candidates will receive scholarship funding to carry out the research projects submitted by the individual applications, and based on their schedule and research interests, a "one-to-one" academic tutor, mainly professors from Peking University, will be determined for providing full guidance on one-year research projects, including a 5-month visiting research at Peking University.

More than 60 distinguished scholars at home and abroad have submitted applications for this program. Five exceptional young and middle-aged scholars were finally selected through the written preliminary screening and online review by a review team of 16 senior scholars based on comprehensive factors including the research projects submitted by the candidates, the disciplinary diversity, and the representativeness of universities. Their academic background includes Public Health, Pharmaceutical Management, and Applied Economics, and their research areas cover Drug Policy, Environmental Health, Health Economics and Health Insurance System, etc.

The First Batch of Young Scholars 第一批青年学者风采



陈山泉 | CHEN Shanquan

英国剑桥大学临床医学院博士后
研究方向为精神病学与老年病学

Postdoctoral fellow at the School of Clinical Medicine at the University of Cambridge, UK. His research interests include psychiatry and geriatrics

Selected research topic

入选研究题目

Polypharmacy among people with dementia in China prevalence, time trends, and determinants.



黄婧 | HUANG Jing

北京大学公共卫生学院劳动卫生与环境卫生学系副研究员
研究方向为环境因素的健康影响及防控效益评价

Assistant professor in Department of Occupational and Environmental Health Sciences, School of Public Health, Peking University. Her research mainly focuses on the health impact of environmental factors and the evaluation of prevention and control benefits.

Selected research topic

入选研究题目

**双碳背景下气候变化及空气污染控制的协同健康效益及经济学评价研究
Study on the Synergistic Health Benefits and Economic Evaluation of Climate Change and Air Pollution Control Under the Carbon Peaking and Carbon Neutrality Background.**



姜明欢 | JIANG Minghuan

西安交通大学医学部药学院副教授

研究方向为药物及疫苗经济学评价、药物政策及卫生技术评估

Associate professor at the School of Pharmacy, Medical Department, Xi'an Jiaotong University, His research interests include economic evaluation of drugs and vaccines, pharmaceutical policy, and health technology evaluation.

Selected research topic

入选研究题目

儿童家长疫苗犹豫量表开发与实证评价研究

Development and Empirical Evaluation of the Vaccine Hesitation Scale for Parents.



邱筠 | QIU Yun

暨南大学经济与社会研究院副教授

研究方向为环境与资源经济学、健康经济学

Associate professor at the School of Economic and Social Studies of Jinan University, with research interests in environmental and resource economics, and health economics.

Selected research topic

入选研究题目

臭氧污染对老年人认知能力下降的影响分析

Analysis of the Impact of Ozone Pollution on Cognitive Decline in the Elderly



石雪竹 | SHI Xuezhu

对外经济贸易大学保险学院助理教授

研究方向为健康经济学、性别、社会保障、公共经济学、劳动经济学等

Assistant professor at the School of Insurance, University of International Business and Economics. Her research focuses on health economics, gender, social security, public economics, and labor economics.

Selected research topic

入选研究题目

医保结算与异地养老

Medical Insurance Settlement and Off-Site Pension

INTERNATIONAL EXCHANGES AND ACADEMIC EVENTS

国际交流与学术活动

2020.12.22

北京大学全球健康发展研究院成立庆典
PKU Institute for Global Health and Development
Launching Ceremony



2021.4.17-18

国家自然科学基金项目
医院管理能力提升研讨会
Hospital Management Capability Improvement Seminar



2021.12.22

全球健康发展论坛2021：低碳经济转型中
的人类健康与医药创新
Peking University Global Health and Development Forum:
Human Health and Medical Innovation in the Era of
Low Carbon Economy



2021.8.28

国家医保药品目录优化与药物经济学评价
第一次研讨会
The first symposium on improving the
National Drug Catalogue for Basic Medical Insurance



2021.7.20-22

第六轮“中美健康二轨对话”
The 6th China-U.S. Track II Dialogue on Health



2021.4.25

北京大学全球健康发展论坛2021
PKU Global Health and Development Forum 2021



2021.12.26

国家医保药品目录优化与药物经济学评价第二次研讨会
The second symposium on improving the
National Drug Catalogue for Basic Medical Insurance



2022.7.20-22

第七轮“中美健康二轨对话”
The 7th China-U.S. Track II Dialogue on Health



2022.7.24

国家医保目录调整学习研讨会
Seminar on adjustment mechanism of National Drug
Catalogue for Basic Medical Insurance



2022.12.22

全球健康发展论坛2022：数字转型和发展鸿沟
Beijing Forum-PKU Global Health Development Forum 2022:
Digital Transformation and Development Divides



STUDENT LIFE

学生风采

